

LOCATION GUIDE

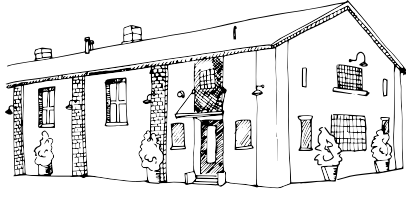
FOR ***PHOTOGRAPHY &
FILM PRODUCTION***

BROOKLYN, NY

**the
Green
Building**

**501
UNION**
BROOKLYN

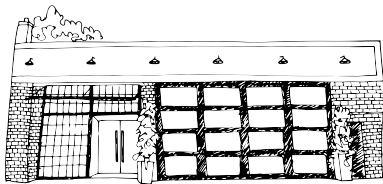
WELCOME.



THE GREEN BUILDING

**452 UNION STREET
BROOKLYN, NY 11231**

718.522.3363 | INFO@THEGREENBUILDING.COM
WWW.THEGREENBUILDING.COM



501 UNION

**501 UNION STREET
BROOKLYN, NY 11231**

347.529.6486 | INFO@501UNION.COM
WWW.501UNION.COM

The Green Building and 501 Union feature over 13,000 combined square feet of indoor and outdoor space. Each venue resonates with a unique character and storied past at the intersection of Union and Bond streets in Brooklyn's Gowanus neighborhood.

Renovations highlight the building's industrial past at the Green Building, which originally served as a brass foundry built in 1889. Original exposed brick walls, an open-beamed wood ceiling and natural light play off the more modern finishes of the polished concrete floors and reclaimed wood and marble bar. An expansive private outdoor courtyard provides an open air space surrounded by seasonal foliage and the building's signature green exterior.

501 Union embraces a more polished nod to the past incorporating luxe wallpapers, elevated light fixtures, and a vaulted 50 foot skylight in the design of the reborn 1916 classic car restoration shop. Custom leather furnishings and Carrera marble topped bars enhance the vibe and are included in the use of the venue.

Each venue may be styled to look like multiple locations and settings. Our pricing varies depending on the size and scope of your project. Use our venues as a character in your scene or as a holding space for talent and crew if shooting nearby in the neighborhood.

Contact us to request a quote or to schedule a tour!

Gowanus

COFFEE SHOPS

RUNNER & STONE
 ABBOTSFORD ROAD
 HUNGRY GHOST
 BOND STREET COFFEE & GOODS

RESTAURANTS & BARS

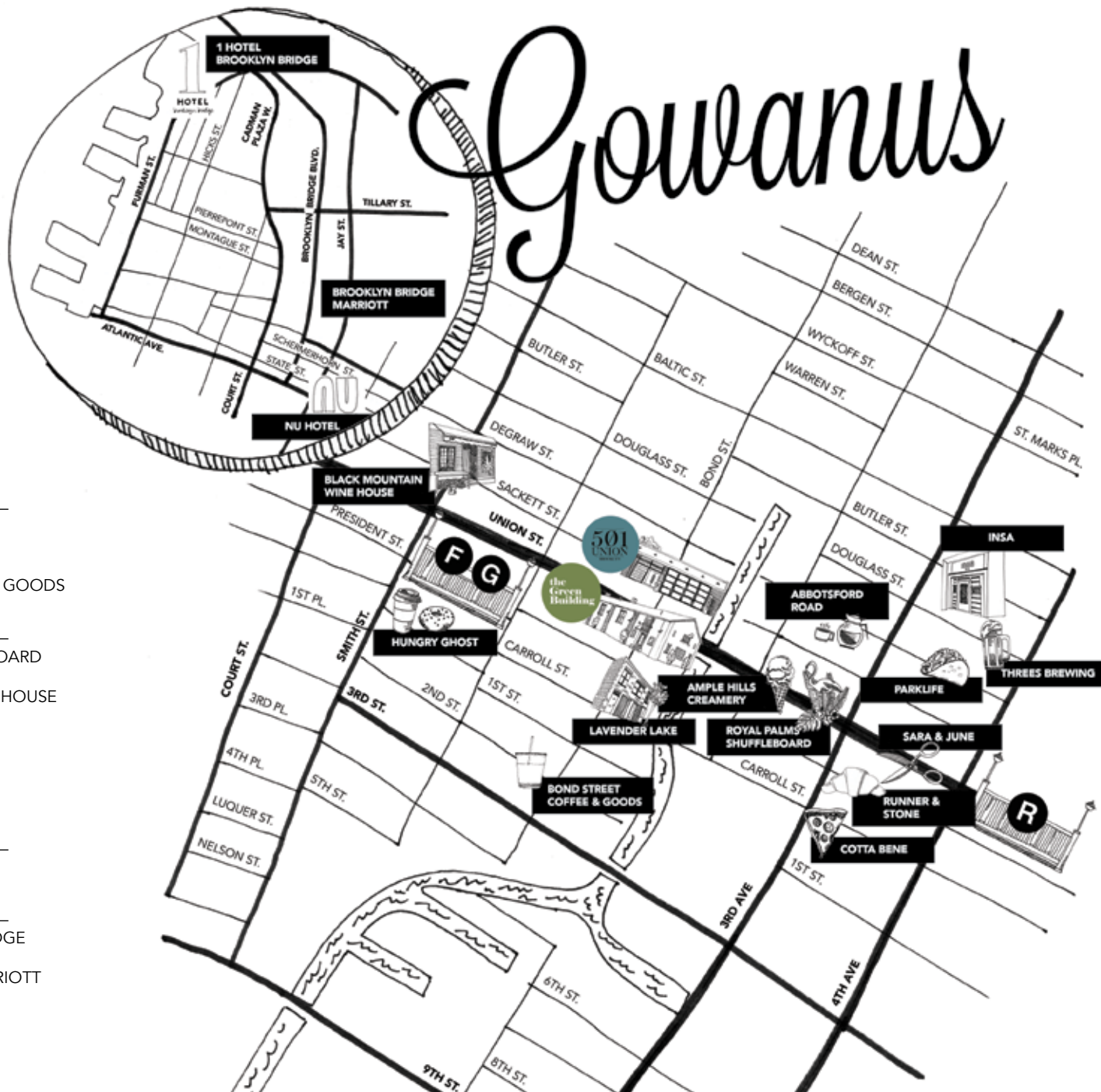
ROYAL PALMS SHUFFLEBOARD
 THREES BREWING
 BLACK MOUNTAIN WINE HOUSE
 COTTA BENE
 LAVENDER LAKE
 AMPLE HILLS CREAMERY
 INSA
 PARKLIFE

SALONS

SARA & JUNE

HOTELS

1 HOTEL BROOKLYN BRIDGE
 NU HOTEL
 BROOKLYN BRIDGE MARRIOTT



the Green Building

MAIN ROOM

- 4,000 sq. ft
- Ground level, drive in accessible
- 30' ft exposed beam ceiling
- Weight-bearing beams
- 4 removable brass chandeliers
(additional removal fees will apply)
- Chandeliers and 8 pin lights on dimmers
- 4 glass doors opening to the outdoor courtyard
- Central heat and air

LOUNGE

- 300 sq. ft
- Great for green room, video village, or holding
- Includes two furnished rooms
- Furniture can be removed
(additional removal fees will apply)

COURTYARD

- 2,400 sq. ft outdoors
- Connected to indoor sound system
- Shade sails available for rent

KITCHEN

- 500 sq. ft indoor space with ample counter space
- 300 sq. ft outdoor prep area
- (2) low-boy refrigerators
- (1) ice machine
- (1) 3 compartment sink
- Service entrance
- 8 outlets on separate 20-amp breakers
- 1 outlet on a 60-amp breaker
- Recycling bins and 55-gal garbage cans; bags must be provided
- Appliances (can be turned off for quiet shoots), including refrigerators and ice machine

AUDIO/VISUAL SYSTEM SPECS

Speakers:

- 2 QSC, K10, Self-powered 10' full-range speaker (1000w) (Wall mounted, forward facing)
- 2 QSC, K8, Self-powered 8' full-range speaker (1000w) (Wall mounted, side facing)

Video System:

- 1 Panasonic, PT-D6000US, DLP Projector, 6500 Lumens
- 1 Fast-fold projection screen, 7' x 12'
(Removable, available upon request)

Control Rack:

- Allen & Heath, ZED10FX, 10 Channel mixing desk with built-in FX
- 1 DBX, Zone PRO 640, 6 x 4 Digital zone processor (security locked, inaccessible)
- 2 Shure, SLX Wireless microphone system (Handheld only)
- 1 Sony, BDP – S770, 3D Blu-ray / DVD / Media Player
- Laptop / Media connection to the A/V system is achieved by removable HDMI cable for video and 1/8" mini-jack cable for audio. Mini-display to HDMI adapter available for Macs.

Additional audio sources such as microphones, instruments, iPods, etc. can be connected to the sound system through any open channel on the mixing console in the control rack.

GENERAL

- Street parking only. Closest garage located at 365 Bond Street.
- City permit required to cone off parking
- Up to 1000 amps of accessible power
- 4 unisex bathrooms incl. 1 wheelchair accessible
- Four-part mobile stage. Each piece is 4'x8' and can be set at 7", 12", or 24" high
- 4 coat racks and approx. 200 hangers

FURNITURE AVAILABLE (INCLUDED IN RATE)

- (160) White Folding Chairs
- (160) Black Folding Chairs
- (20) 6' x 30" Banquet Tables
- (20) 60" Round Tables
- (10) 30" Round, 42" High Cocktail Tables
- (10) 30" Round, 30" High Cocktail Tables
- (1) Indoor Mobile Bar
- (1) Outdoor Mobile Bar
- (5) Outdoor Wood Table & Chair Sets
- (4) Outdoor Mosaic Tile Table & Chair Sets

PREMIUM RENTALS

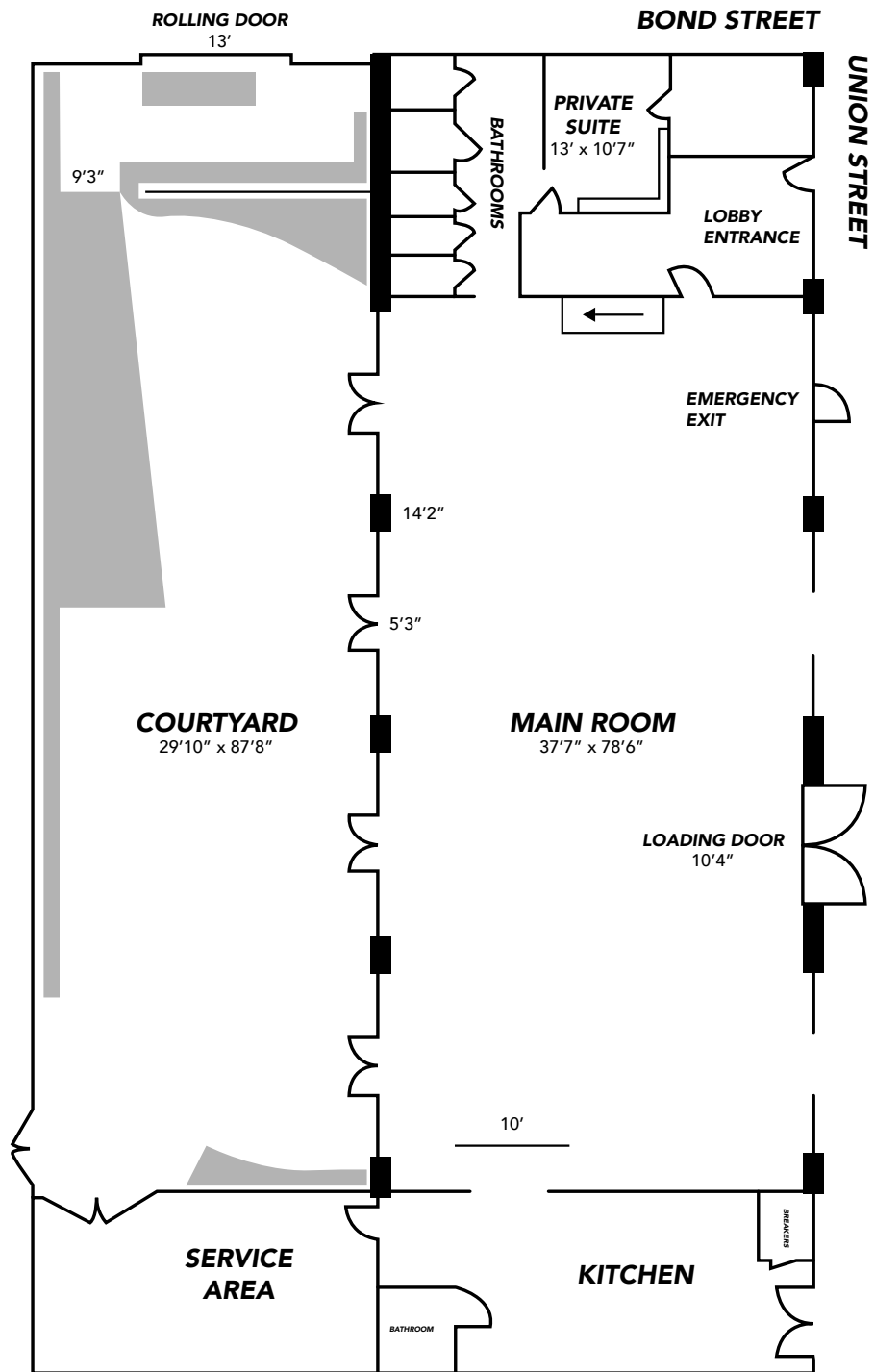
- (16) 8' x 42" Custom Barn Tables \$95 per table
- (200) Tolix Gunmetal Bistro Chairs \$8 per chair
- (2) Light Curtains (8 Strings Per Set) \$250 per set *
- (1) Light Drape \$350 *
- (1) Neon Heart \$300 **
- (1) "Because Love" Neon \$450 **
- (1) Fire Pit (4 Hour Rental) \$600
- (3) 18' x 18' Shade sails \$500

**Inclusive of installation fee*

***Subject to availability*

*Furniture set up service is available upon request.
Additional fees will apply.*

FLOOR PLAN



MAIN ROOM



COURTYARD



PRIVATE SUITE



ENTRY WAY



FAQ'S

WHAT ARE YOUR RATES?

Our rates vary depending on size, duration and scope of the production.

DO YOU RENT THE SPACE PER HOUR OR PER DAY?

Venue rentals are per day however partial day rentals (*with a 4 hour minimum*) may be permitted based on availability.

CAN WE RENT BY THE ROOM?

All rentals include ground level access to the venue with only one production per day. Use of the lofted office area is an additional fee.

WHAT IS INCLUDED IN THE VENUE RENTAL?

- Cleaning before and after use
- One (1) indoor mobile bar with back bar
- One (1) outdoor mobile bar
- Lounge furniture (*sofas, armchairs, desk*) in the Private Suite
- Four (4) coat racks and approximately 200 hangers
- Six (6) garbage cans (*heavy duty 55-gal garbage bags must be provided*)
- Paper products and soap for restrooms

CAN THE FURNITURE BE REMOVED FROM THE PRIVATE SUITE?

Specific items may be repositioned in the space or removed with advance request in writing.

WHAT IS THE HEIGHT OF THE SPACE?

The walls are 17.5 feet, and the highest point of the ceiling is 24 feet.

DO YOU HAVE PARKING?

Street parking is available. There is also a QuikPark garage located at 365 Bond Street, which is approximately a four (4)

minute walk from the venue. The venue has a load in street parking space that can be coned off to reserve for your use with 24 hours advance request.

CAN WE BLOCK OFF PARKING ON THE STREET?

You must request a permit from the city.

DOES THE BUILDING HAVE HEAT AND A/C?

Yes.

HOW MANY WASHROOMS ARE ONSITE?

Four (4) individual, unisex washrooms, one (1) of which is wheelchair-accessible.

IS THE BUILDING WHEELCHAIR ACCESSIBLE?

Yes.

ARE YOU A SOUND STAGE?

The venue is not a sound proofed facility.

IS THERE NOISE FROM THE SURROUNDING NEIGHBORHOOD?

The venue is located at the intersection of Union and Bond streets and there may be noise from vehicles and trucks that is audible within the venue.

DO YOU HAVE A KITCHEN OR FOOD PREP AREA ONSITE?

There is a 500 sq. ft kitchen featuring ample counter space, two (2) low-boy refrigerators, one (1) ice machine, one (1) three compartment sink, recycling bins and trash cans. There are eight outlets on separate 20-amp breakers and one outlet on a 60-amp breaker. There is a separate service entrance into the kitchen from Union Street as well as an outdoor prep area for catering grills, smokers and deep-frying. Caterers may opt to bring in additional

cooking equipment. Please check with your venue coordinator for any restrictions.

IS THERE ACCESS TO BREAKERS?

The client may have access to breakers with Green Building staff supervision.

IS THERE A PRIVATE GREEN ROOM FOR VIP TALENT?

The 300 sq ft Private Suite is ideal for Green Room use. The lounge includes two furnished rooms.

DO YOU HAVE SPACE FOR CATERING / HOLDING / BASE CAMP?

Yes. If available, our sister venue across the street, 501 Union, can be rented if you need additional space.

WHAT MATERIAL IS THE FLOOR?

The floor is finished concrete. Floors should be covered with packing blankets where heavy equipment (*including lights*) is to be stored or set up.

CAN THE CHANDELIERS BE REMOVED?

All 4 chandeliers can be raised or removed by Green Building staff for an additional fee. Requested removal of the chandeliers must be submitted in writing no later than 24 hours prior to use of the space.

CAN THE CURTAINS BE REMOVED?

The curtains may be removed by Green Building staff for an additional fee. Requested removal of the curtains must be submitted in writing no later than one business day prior to use of the space.

MAY ADDITIONAL LIGHTING BE BROUGHT IN?

Additional lighting may be brought into the venue. There are up to 1000 amps of accessible power in the building.

DO YOU HAVE BLACKOUT CURTAINS?

The venue does not have blackout curtains but does have floor length curtains that may be drawn to dampen natural light. The curtains provide privacy from pedestrian and street traffic.

FAQ'S

CON'T

CAN VEHICLES BE BROUGHT INTO THE MAIN SPACE?

Certain vehicle types are permitted in the main space with prior written approval from the venue.

CAN ANYTHING BE HUNG OR INSTALLED FROM THE WALLS OR CEILING?

Nothing may be attached to any part of the building without prior written approval. There may be no drilling, painting or installation without prior written approval.

AM I RESPONSIBLE FOR CLEAN-UP?

The Green Building will clean the space before and after your use: sweeping, mopping, detailing the bathrooms, and taking care of any necessary repairs. In order to get your full security deposit back, you must complete the following break down procedures immediately following use of the space:

1. Glasses, dishes, food, drinks and personal items removed from lounge area.
2. Food and drink must be removed from kitchen.
3. All boxes must be broken down, trash bagged and removed from kitchen through rear emergency exit. Green Building staff will provide large format receptacle.
4. Tables and chairs must be folded and stacked against one wall in the main space. Green Building furniture rentals must be separated from outside rentals when applicable.
5. Linens must be bundled and tied, or bagged and consolidated with any outside rentals.

DO YOU HAVE AN OUTDOOR SPACE?

Yes, use of our 2400 sq. ft. courtyard, is included in your rental. Please note, the courtyard is closed in the months of January, February, and March. Up to five (5) wooden "Schweiger" tables with chairs, up to four (4) mosaic tile tables with chairs and one (1) mobile outdoor bar with an additional 6 ft. banquet table are included in rental.

DO YOU PROVIDE HEATERS FOR THE COURTYARD?

No, but you are more than welcome to rent heaters from a tent company.

ARE THERE ANY NOISE RESTRICTIONS FOR THE COURTYARD?

All music must end by at 10pm and courtyard access ends at 12am. No amplified bands are permitted in the courtyard.

CAN I KEEP THE LARGE GLASS DOORS OPEN DURING THE RENTAL?

Yes, but the doors must be closed by 10:00 pm to comply with NYC noise ordinance. Only a member of The Green Building staff may open or close these doors. Please bear in mind that heating and cooling of the space is compromised when the doors are open.

HOW DO I BOOK A DATE?

The full amount of the venue fee is due upon booking if the contracted date(s) is within 59 days. In addition, we require a security deposit, which is refunded 10-15 business days after use of the space, provided there are no damages. A 50% deposit of the rental fee is due at the time of booking if more than 60 days in advance of the contracted date. The remaining balance is due 30 days before venue use. The Green Building accepts cash, check, money order, and all major credit cards (subject to a 3% processing fee).

IF MY SHOOT RUNS OVER THE EXPECTED TIME DOES THE VENUE PERMIT OVERTIME HOURS?

Overtime use of the space beyond the contracted period accrues at the rate of \$500 per additional hour for the first two hours and \$1000 per additional hour for the following two hours.

WHAT IS YOUR CANCELLATION POLICY?

No cancellations are permitted without full payment of the fee (including rain dates). Once payment has been received there are no refunds.

IS SMOKING ALLOWED?

There is absolutely no smoking allowed anywhere in the building.

ARE CANDLES PERMITTED?

All candles must be in votives. No open flames are permitted. No flammable objects are permitted.

CAN WE USE A FOG MACHINES?

Fog machines may be used upon request with 24 hours advance notice.

ARE SPECIAL EFFECTS ALLOWED?

Special effects must be pre-approved. Confetti, loose glitter, sparklers, and open flames are strictly prohibited.

DO I NEED TO PROVIDE MY OWN INSURANCE?

We require provision of a certificate of insurance (COI) evidencing a general liability insurance policy for no less than \$500,000.

ARE ANIMALS PERMITTED?

All animals to be present during your use of the space must be on leash or in carriers. Your venue manager must be advised in advance of your arrival at the venue if animals will be present.

CAN WE BRING IN OUR OWN CATERER?

Yes, outside catering is allowed. Please refer to our Preferred Caterer List provided on the venue website.

DO YOU HAVE LIGHTING AND GRIP EQUIPMENT?

No. We recommend Eastern Effects down the block for equipment.

WHERE CAN WE FIND SUPPLIES IN THE NEIGHBORHOOD?

Lowe's, Staples, and Whole Foods are all within a few blocks of the Green Building.

501

UNION

BROOKLYN

MAIN ROOM

- 3,000 sq. ft.
- 50ft peaked skylight (*may be covered by three blackout screens*)
- 15ft Carrera marble top bar (*appliances behind the bar can be turned off for quiet shoots*)
- Jason Miller Modo chandeliers on individual dimmers
- Wall of full height glass doors open to the covered atrium (*sheer black curtains can be closed to dampen light*)
- Central heat and air conditioning

COCKTAIL LOUNGE

- 1,400 sq. ft.
- 15ft Carrera marble top bar (*lowboy refrigerators behind the bar can be turned off for quiet shoots*)
- Coat check room including metal hangers
- Central heat and air conditioning
- Lighting on dimmers
- Lounge furniture (*may be moved*)
- Ceiling-mounted speakers connected to house sound system

COVERED ATRIUM

- 1,300 sq. ft.
- Ground level load-in, drive-in accessible
- Full frosted glass wall can accordion open for full access
- Planters along east and west walls of the room
- Lighting on dimmers
- Café lights draped on ceiling beams and string lights along climbing vines
- Ceiling-mounted speakers connected to house sound system

PRIVATE SUITE

- 700 sq. ft.
- Comfortable club banquet seating
- Great for green room
- Private bathroom

KITCHEN

- 620 sq. ft. with 100 sq. ft. of counter space
- Appliances (*can be turned off for quiet shoots*), including convection oven, refrigerators, chest freezer, sinks, dishwasher, ice machine
- 14 outlets on separate 20 amp breakers, 2 outlets on 60-amp breakers

AUDIO/VISUAL SYSTEM SPECS

Main Room:

- Approximate Total Wattage 8000w
- 2 QSC AP15, 2-way speaker
- 4 QSC ADS82, 2-way speaker
- 2 QSC Subwoofers
- 1 QSC KW 181 Self-powered subwoofer

Available Remote Inputs/Outputs:

- 2 Stereo XLR inputs at stage/projection screen location
- 1 Mono XLR at stage/projection screen location
- 1 Stereo XLR at south bar column location
- 1 Mono XLR at south bar location

Video Display:

- 1 BenQ 5000 lumen projector (16:9, 1080p)
- 1 Da Lite motorized projection screen (120")

Control Rack:

- Rane 8 channel line mixer (*Mic control, computer/iPod control, Remote input control, 2x open XLR inputs*)
- 2 Shure SLX handheld wireless microphones
- 1 1/8" audio cable for computer/iPod playback
- 1 Kramer video switcher
- 1 Sony Blu-ray player

Cocktail Lounge:

- Approximate Total Wattage 1200w
- 6 QSC ADS6t

Available Remote Inputs/Outputs:

- 2 Stereo XLR inputs at North bar location
- 1 Mono XLR at North bar location

Covered Atrium:

- Approximate Total Wattage 1000w
- 2 x QSC S10t

Additional audio sources such as microphones, instruments, iPods, etc. can be connected to the sound system through any open channel on the mixing console in the control rack.

GENERAL

- 8 unisex accessible bathrooms
- Street parking only. Closest garage located at 365 Bond Street.
- City permit required to cone off parking
- Four-part mobile stage. Each piece is 4'x8' and can be set at 7", 12", or 24" high
- Recycling bins and 55-gal garbage cans; bags must be provided

FURNITURE AVAILABLE (INCLUDED IN RATE)

(160) Black Folding Chairs
(20) 6' x 30" Banquet Tables
(10) 30" Round, 42" High Cocktail Tables
(10) 30" Round, 30" High Cocktail Tables

PREMIUM RENTALS

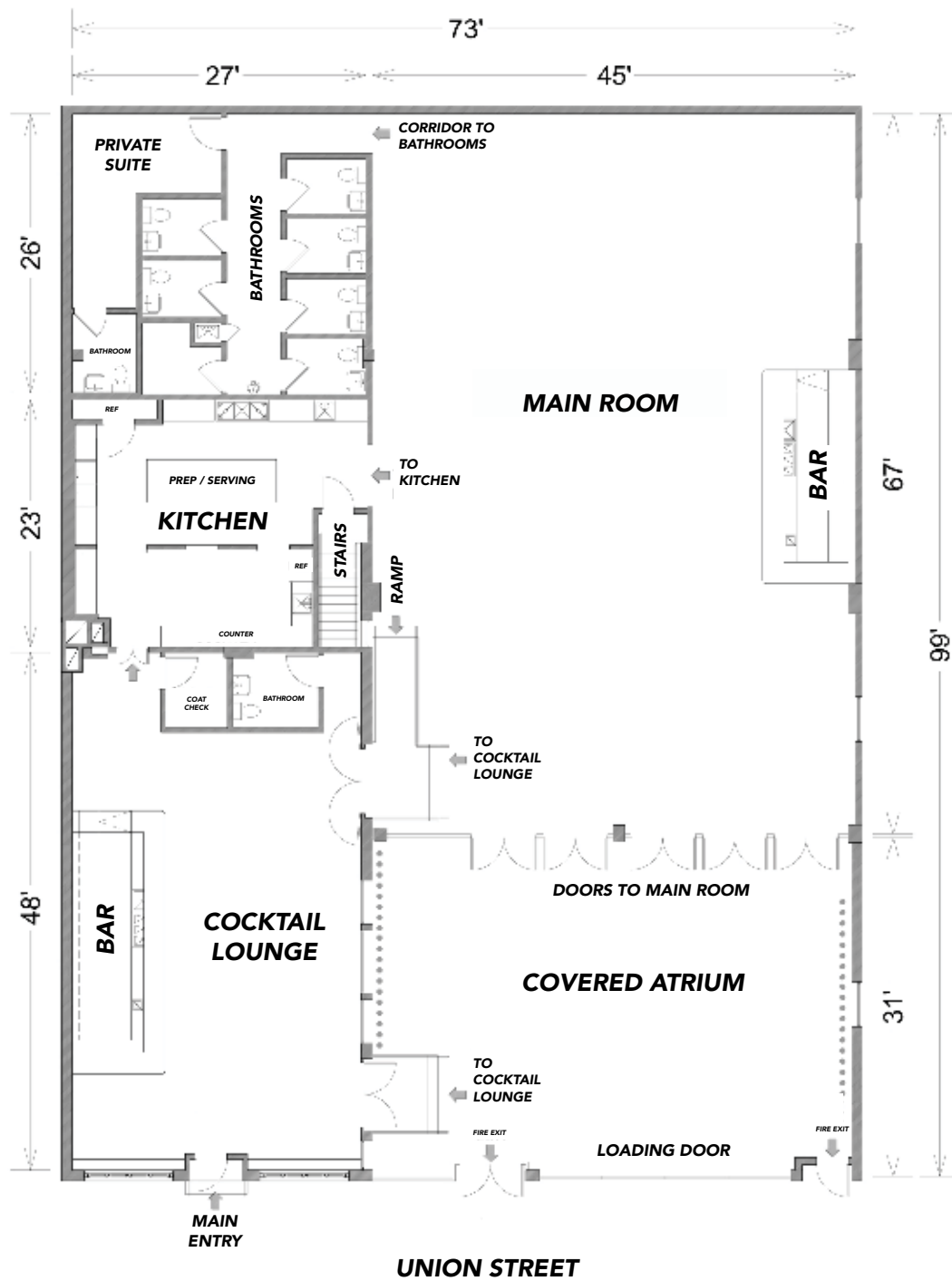
- (16) 8' x 48" Custom-designed walnut farm tables \$121 per table
- (26) Custom-designed walnut benches \$18 per bench
- (160) Black bentwood cross back chairs with black cushions \$8 per chair
- (160) Gold ballroom chairs with ivory cushions \$8 per chair
- (5) Cast and sheet steel café table, seats 4 \$18 per table
- (40) Wire café chair (*with grey or lime green cushion*) \$5 per chair
- (1) Disco Ball with pin spotlights \$250*
- (2) Light Curtains \$250 each*
- (1) Neon Heart \$300**
- (1) "Because Love" Neon \$450**

**Inclusive of installation fee*

***Subject to availability*

*Furniture set up service is available upon request.
Additional fees will apply.*

FLOOR PLAN



MAIN ROOM



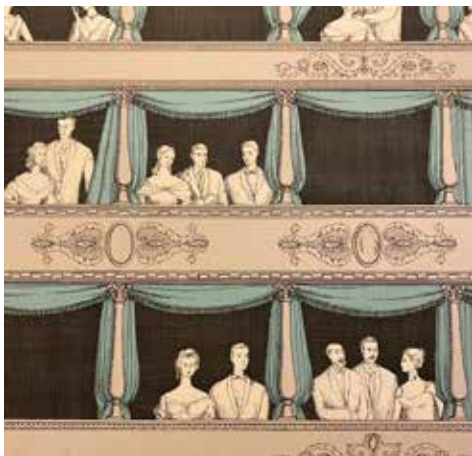
LOUNGE



ATRIUM



PRIVATE SUITE



FAQ'S

WHAT ARE YOUR RATES?

Our rates vary depending on size, duration and scope of the production.

DO YOU RENT THE SPACE PER HOUR OR PER DAY?

Venue rentals are per day however partial day rentals (*with a 4 hour minimum*) may be permitted based on availability.

CAN WE RENT BY THE ROOM?

All rentals include ground level access to the venue with only one production per day.

WHAT IS INCLUDED IN THE VENUE RENTAL?

- Cleaning before and after use
- (1) bar in the Main Space
- (1) bar in the Cocktail Lounge
- Lounge furniture (*sofas, armchairs, coffee tables*) in the Cocktail Lounge
- Coat check room equipped with racks and approximately 160 hangers
- (4) garbage cans (*heavy duty 55-gal garbage bags must be provided*)
- Paper products and soap for restrooms

CAN THE FURNITURE BE REMOVED FROM THE COCKTAIL LOUNGE?

Specific items may be repositioned in the space with advance request in writing. The furniture may not be removed from the Cocktail Lounge.

CAN THE FURNITURE BE REMOVED FROM THE PRIVATE SUITE?

The furniture may not be removed from the Private Suite.

DO YOU HAVE PARKING?

Street parking is available. There is also a QuikPark garage located at 365 Bond Street, which is approximately a four (4)

minute walk from the venue. The venue has a load in street parking space that can be coned off to reserve for your use with 24 hours advance request.

CAN WE BLOCK OFF PARKING ON THE STREET?

You must request a permit from the city.

DOES THE BUILDING HAVE HEAT AND A/C?

Yes. Please note: the covered atrium is considered an outdoor space and is not climate controlled.

HOW MANY WASHROOMS ARE ONSITE?

(8) individual, unisex washrooms, all are wheelchair-accessible.

IS THE BUILDING WHEELCHAIR ACCESSIBLE?

Yes.

ARE YOU A SOUND STAGE?

The venue is not a soundproofed facility.

IS THERE NOISE FROM THE SURROUNDING NEIGHBORHOOD?

The venue is located at the intersection of Union and Bond streets and there may be noise from vehicles and trucks that is audible within the venue.

DO YOU HAVE A KITCHEN OR FOOD PREP AREA ONSITE?

There is a 620 sq. ft kitchen featuring 100 sq. ft counter space, (1) refrigerator, (1) chest freezer, (1) ice machine, (1) three-compartment sink, recycling bins and trash cans. There are fourteen outlets on separate 20-amp breakers and two outlets on 60-amp breakers. Entrance into the Kitchen from the Main Space and Cocktail Lounge. There is no outdoor prep area for catering grills, smokers, or high-

quantity deep-frying. Caterers may opt to bring in additional cooking equipment. Please check with your venue coordinator for any restrictions.

IS THERE ACCESS TO BREAKERS?

The client may have access to breakers with 501 Union staff supervision.

IS THERE A PRIVATE GREEN ROOM FOR VIP TALENT?

The 700 sq ft Private Suite is ideal for Green Room use. The lounge is furnished and includes a private washroom.

DO YOU HAVE SPACE FOR CATERING / HOLDING / BASE CAMP?

Yes. If available, our sister venue across the street, The Green Building, can be rented if you need additional space.

WHAT IS THE FLOOR MADE OF?

The floor in the Main Space and Covered Atrium is epoxy-finished concrete. The floor in the Cocktail Lounge is reclaimed hardwood. Floors should be covered with blankets where heavy equipment (including lights) is to be stored or set up.

CAN THE CHANDELIERS BE REMOVED?

The chandeliers may not be removed.

CAN THE CURTAINS BE REMOVED?

The curtains may not be removed.

MAY ADDITIONAL LIGHTING BE BROUGHT IN?

Additional lighting may be brought into the venue. There are up to 1000 amps of accessible power to the building.

CAN THE SKYLIGHT IN THE MAIN SPACE BE COVERED OR BLACKED OUT TO CONTROL LIGHT?

The venue has 3 blackout panels that may be installed to block the light from the skylight.

FAQ'S

CON'T

CAN THE WINDOWS AND MIRRORS BE COVERED?

The windows and mirrors may be covered using paper or fabric using venue-approved adhesives. Any covering must be approved in advance, in writing, by the venue.

CAN VEHICLES BE BROUGHT INTO THE MAIN SPACE?

Certain vehicle types are permitted in the main space with prior written approval from the venue.

CAN ANYTHING BE HUNG OR INSTALLED FROM THE WALLS OR CEILING?

No holes may be drilled into the venue and no painting of the venue is permitted. Installations require prior written approval.

AM I RESPONSIBLE FOR CLEAN-UP?

501 Union will clean the space before and after your use: sweeping, mopping, detailing the bathrooms, and taking care of any necessary repairs. In order to get your full security deposit back, you must complete the following break down procedures immediately following use of the space:

1. Glasses, dishes, food, drinks and personal items removed from the Private Suite.
2. Food and drink must be removed from kitchen.
3. All boxes must be broken down, trash bagged and removed from the venue through the Garden doors. 501 Union staff will provide large format receptacle.
4. Tables and chairs must be folded and stacked against one wall in the Main Space. 501 Union furniture rentals must be separated from outside rentals when applicable.
5. Linens must be bundled and tied, or bagged and consolidated with any outside rentals.

ARE THERE ANY NOISE RESTRICTIONS FOR THE COVERED ATRIUM?

All music must end by at 10pm. No amplified bands are permitted in the Covered Atrium.

HOW DO I BOOK A DATE?

The full amount of the venue fee is due upon booking if the contracted date(s) is within 59 days. In addition, we require a security deposit, which is refunded 10-15 business days after use of the space, provided there are no damages. A 50% deposit of the rental fee is due at the time of booking if more than 60 days in advance of the contracted date. The remaining balance is due 30 days before venue use. 501 Union accepts cash, check, money order, and all major credit cards (subject to a 3% processing fee).

IF MY SHOOT RUNS OVER THE EXPECTED TIME DOES THE VENUE PERMIT OVERTIME HOURS?

Overtime use of the space beyond the contracted period accrues at the rate of \$500 per additional hour for the first two hours and \$1000 per additional hour for the following two hours.

WHAT IS YOUR CANCELLATION POLICY?

No cancellations are permitted without full payment of the fee (including rain dates). Once payment has been received there are no refunds.

IS SMOKING ALLOWED?

There is absolutely no smoking allowed anywhere in the building.

ARE CANDLES PERMITTED?

All candles must be in votives. No open flames are permitted. No flammable objects are permitted.

CAN WE USE A FOG MACHINES?

Fog machines may be used upon request with 24 hours advance notice.

ARE SPECIAL EFFECTS ALLOWED?

Special effects must be pre-approved. Confetti, loose glitter, sparklers, and open flames are strictly prohibited.

DO I NEED TO PROVIDE MY OWN INSURANCE?

We require provision of a certificate of insurance (COI) evidencing a general liability insurance policy for no less than \$500,000.

ARE ANIMALS PERMITTED?

All animals to be present during your use of the space must be on leash or in carriers. Your venue manager must be advised in advance of your arrival at the venue if animals will be present.

CAN WE BRING IN OUR OWN CATERER?

Yes, outside catering is allowed. Please refer to our Preferred Caterer List provided on the venue website.

DO YOU HAVE LIGHTING AND GRIP EQUIPMENT?

No. We recommend Eastern Effects down the block for equipment.

WHERE CAN WE FIND SUPPLIES IN THE NEIGHBORHOOD?

Lowe's, Staples, and Whole Foods are all within a few blocks of 501 Union.